

SUPER SEAL

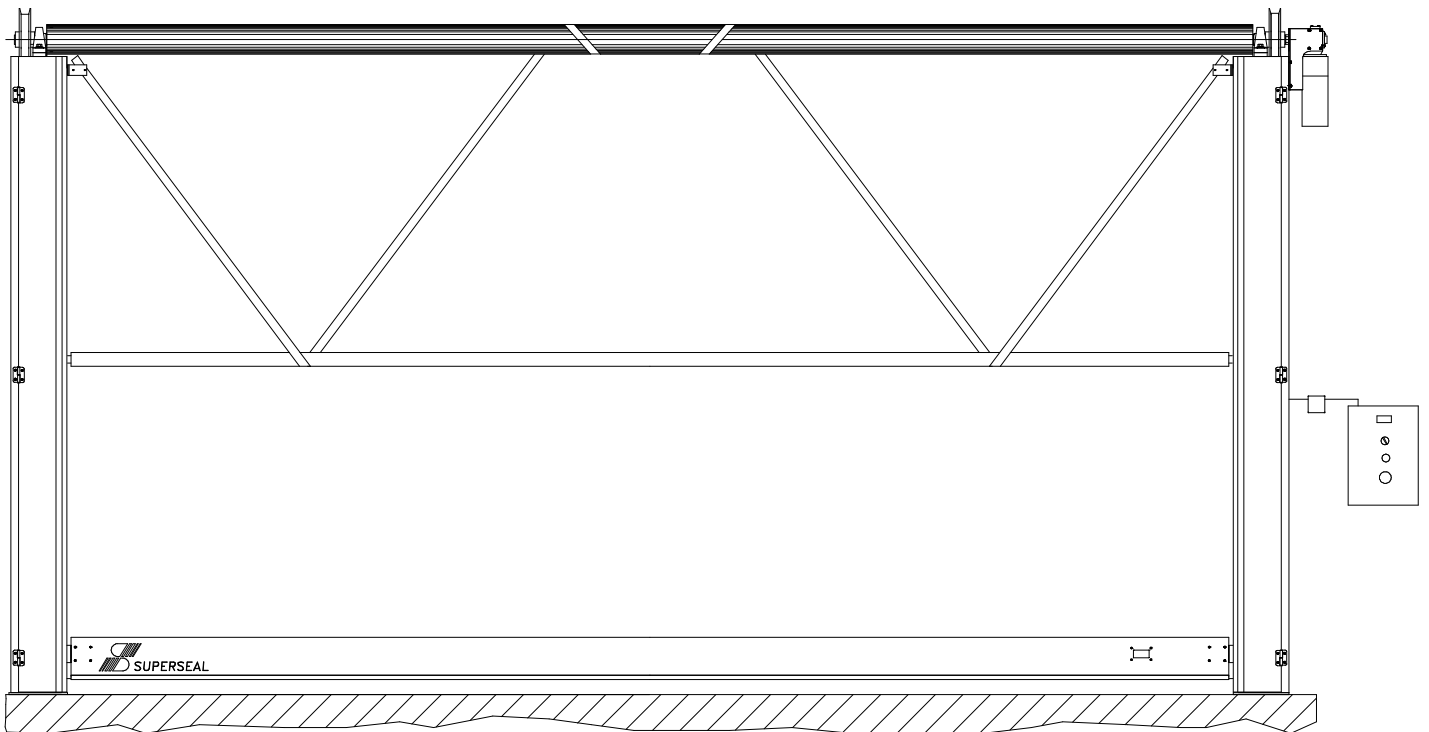
ATMODOOR



670 Rowntree Dairy Road, Woodbridge, Ontario, Canada L4L 5T8 TEL: 1-800-337-3239 www.supersealmfg.com

Series 8500L - High Speed Roll Up Door

MANUAL





670 Rowntree Dairy Road, Woodbridge, Ontario, Canada L4L 5T8 TEL: 1-800-337-3239 www.supersealmfg.com

Series 8500L – High Speed Roll Up Door

INSTALLATION LISTS

THE FOLLOWING LISTS COVER BASIC INSTALLATION, NOT INCLUDING OPTIONS OR ELECTRICAL

Components List

No.		Qty.
1	Right Side Upright	1
2	Left Side Upright	1
3	Top Stabilizing Tube	1
4	Fabric Roll	1
5	Counterweight Frame	2
6	Counterweight Blocks	RS=LS
7	Windbar	2
8	Motor	1
9	Control Panel	1
10	Hardware Box	1

Hardware Supplied List (per Unit)

No.		Qty.
1		
2		
3		
4		
5		

No.		Qty.
6		
7		
8		
9		
10	Installation Instructions	1

Recommended Tools List

Tape Measure
Plumb line or Level
Laser Level or Water Level
Pencil or Marker
Square
Power Drill
Hammer Drill
Masonry Drill Bit

Socket Set – Standard (Imperial) & Metric
Wrench Set – Standard (Imperial) & Metric
Allen Key Set – Standard (Imperial) & Metric
Hammer
Screwdrivers
Knife or Scissors

NOTE: SUPERSEAL RECOMMENDS USING A CRANE OR SIMILAR DEVICE TO LIFT THE FABRIC ROLL DUE TO ITS EXTREME LENGTH AND WEIGHT.

Series 8500L - High Speed Roll Up Door

INSTALLATION INSTRUCTIONS

READ ALL INSTRUCTIONS BEFORE INSTALLING DOOR. SUPER SEAL MFG. LTD. WILL NOT BE HELD RESPONSIBLE FOR IMPROPER INSTALLATION OF ANCHORING DEVICES, OR FOR INSTALLATION INTO AGED OR UNSOUND CONCRETE, CONCRETE BLOCK, OR OTHER WALL OR FLOOR MATERIAL WHICH MAY RESULT IN PREMATURE PRODUCT WEAR, PRODUCT FAILURE, PROPERTY DAMAGE, OR PERSONAL INJURY.

1. Check Order

- a. **Measure door opening height and width.** Compare to Purchase Order.
- b. **Check Components List and Hardware Supplied List.** Make sure all components and hardware are present.
- c. **Check Recommended Tools List.** Make sure all recommended tools are available.
- d. **Determine method of mounting door to wall.** Examine wall construction and decide whether to use concrete anchors, use threaded rod, or use another fastening technique. This door must be securely fastened to the wall.
 - **The Customer must supply mounting hardware.**
 - **WELDING THE DOOR TO THE WALL IS NOT RECOMMENDED.**
- e. **Installation Recommendations:**
 - Use serviceable locktight for all fasteners, including bolts and set screws.
 - Use anti-seize on all shafts.

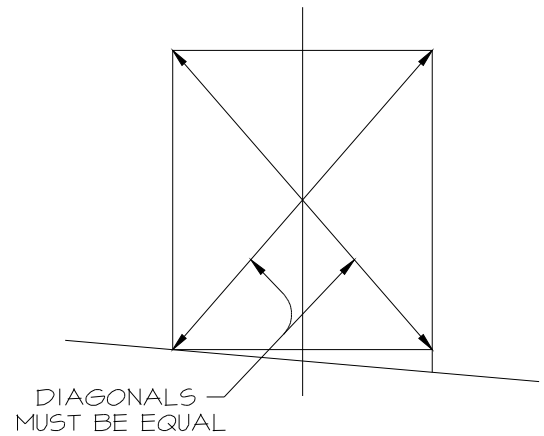


FIG. 1

2. Prepare Door Frame

- a. **Correct door opening height and width.**
 - **Measure left and right sides** of door opening from top to bottom. The height of the left and right sides of the opening should be the same.
 - **Measure the top and bottom** of door opening from side to side. The width of the top and bottom of the opening should be the same.
 - **If measurements do not coincide**, see Figures 1, 2, and 3.
 - * **If floor is sloped**, level the floor in and around door opening (Figure 1).
 - * **If the wall is badly aligned**, shim to make true (Figure 2).
 - * **If the door jambs are crooked**, install door on the center line (Figure 3).
- b. **CHECK ENTIRE MOUNTING SURFACE** on each side of the door opening.
 - Check over the entire height of the door.
 - **THE MOUNTING SURFACE MUST BE PLUMB AND LEVEL FROM TOP TO BOTTOM.**



FIG. 2

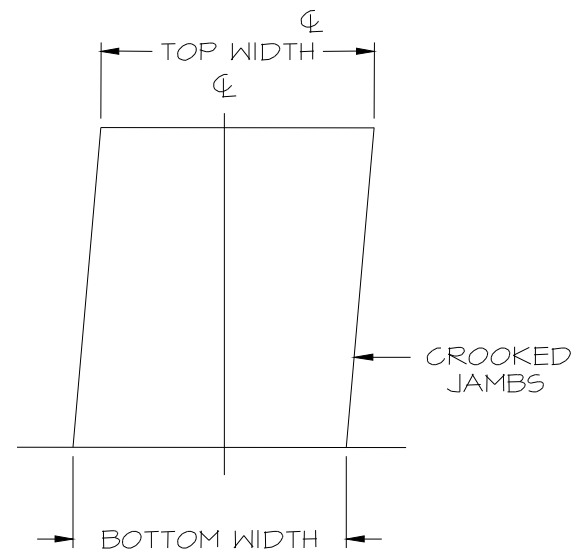


FIG. 3

2. Prepare Door Frame, continued

- b. Ensure there is enough space to access mounting components (Figures 4a and 4b).

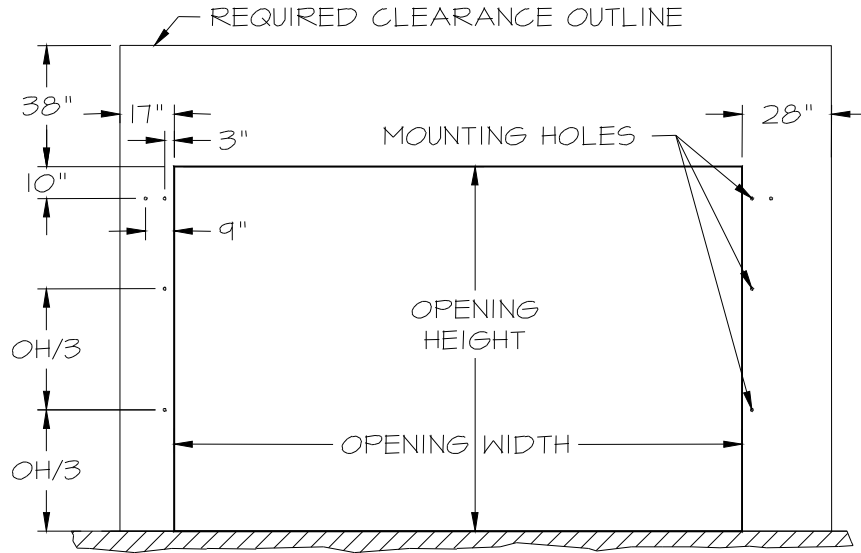


FIG. 4A

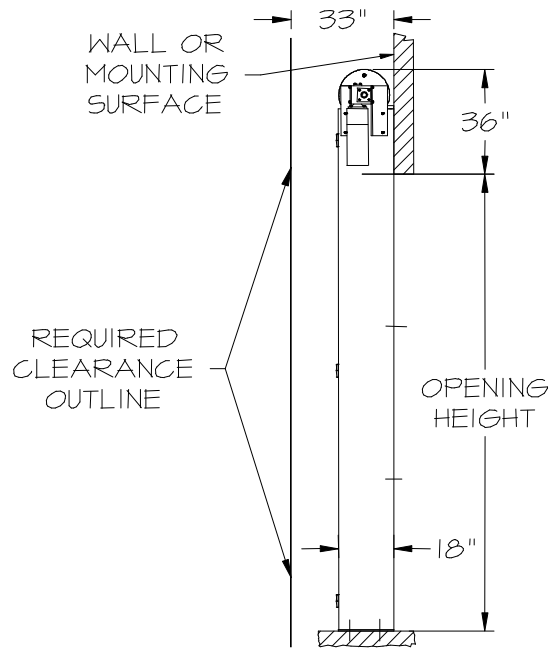


FIG. 4B

3. Attach Uprights and Top Stabilizing Tube

- a. **Clamp Uprights** to wall.
 - **Open or remove upright covers.**
 - **Clamp one Upright flush to edge** of a door jamb with mounting holes against wall and anchor plates at the bottom (Figure 5a).
 - **Repeat** for the other Upright.
- b. **Place Top Stabilizing Tube** between left and right Uprights.
 - **Match bolt holes.**
 - **Insert** washer and bolt through holes.
 - **Tighten.**

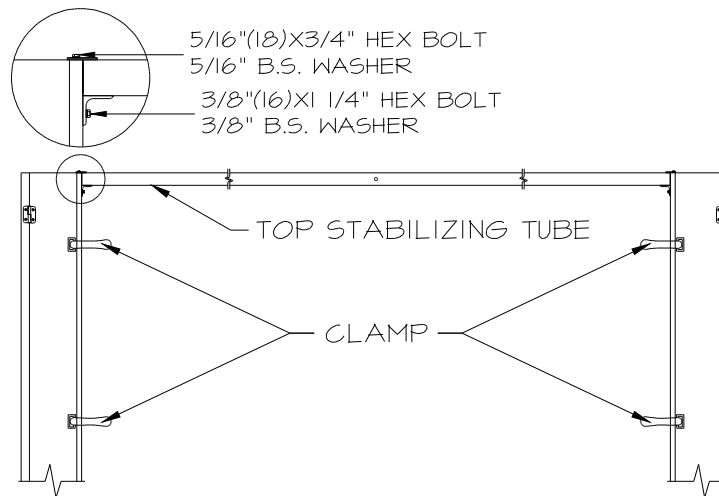


FIG. 5A

4. Attach Uprights to Wall

- a. Check Uprights and Top Stabilizing Tube for plumb, level, and square.
 - Measure top to bottom, left to right, and diagonally from all corners (Figure 5b).
 - Check for square at top of each Upright (Figure 5c).
 - * Place square in corner where Upright and Top Stabilizing Tube intersect.
 - **MAKE SURE UPRIGHTS ARE NOT TWISTED OR WARPED.**
 - * Check each Upright in front and along both sides.
 - Shim Uprights as needed so Uprights will not twist or warp when attached to wall (Figure 5d).

NOTE: THE UPRIGHTS MUST BE PLUMB, LEVEL, AND SQUARE IN HEIGHT, WIDTH, AND DEPTH.

b. Attach Uprights to wall.

- Drill through mounting holes.
- Insert customer supplied hardware into mounting holes and tighten.
- Check door for plumb, level, and square.
- **MAKE SURE UPRIGHTS ARE PROPERLY ALIGNED AND NOT DEFORMED.**

NOTE: THIS DOOR MUST BE PLUMB, LEVEL, AND SQUARE IN ORDER TO WORK PROPERLY.

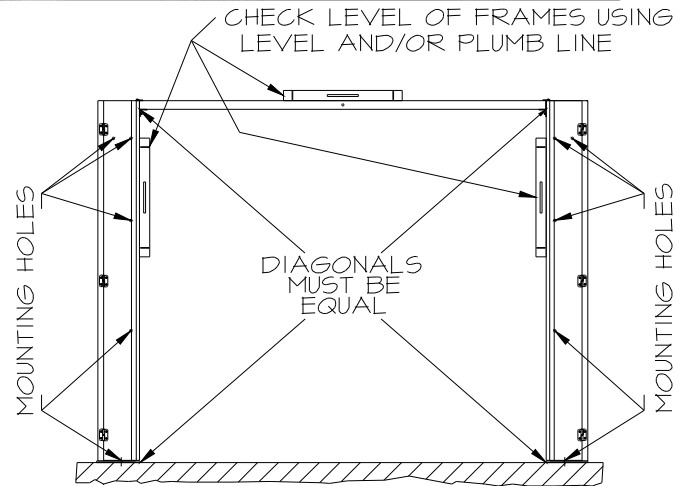


FIG. 5B

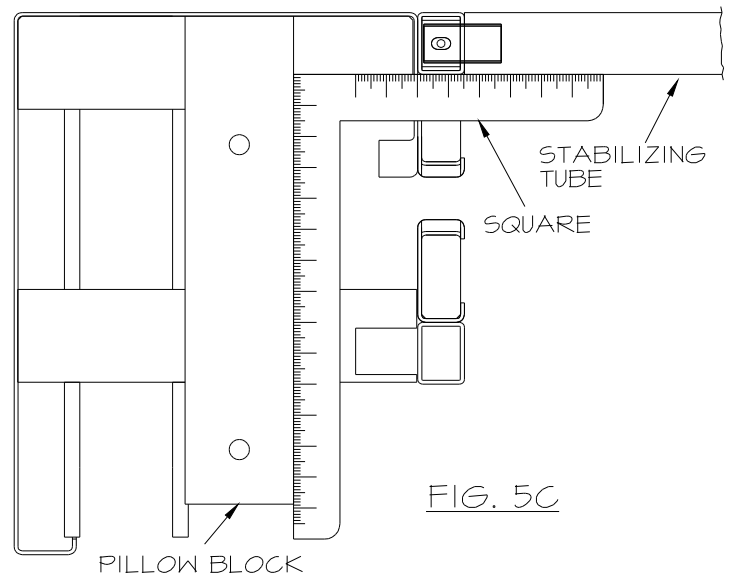


FIG. 5C

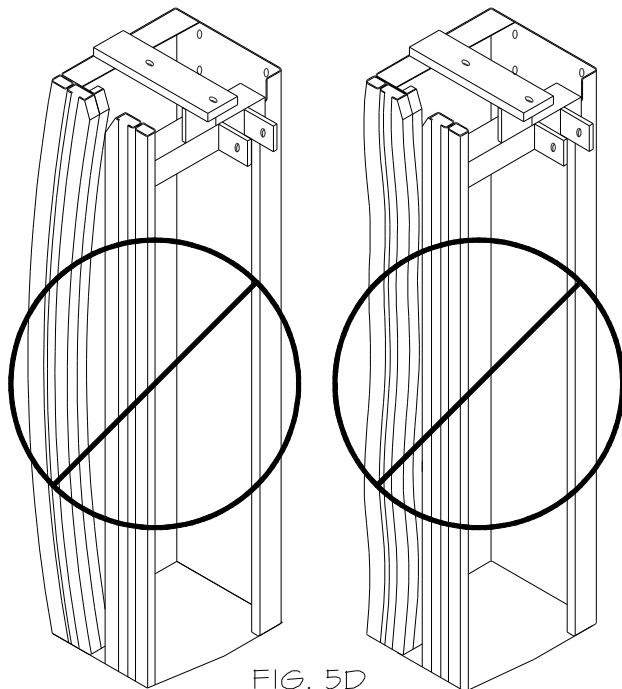


FIG. 5D

5. Install Fabric Roll

- Install Counterweight Drums
 - The straps **MUST** fall over the front.
 - **Remove tape and key** from Motor end of Fabric Roll Shaft.
 - **Set key aside** for Motor mounting.
 - **Do not remove Roll Retaining Straps** at this time.
- b. **Position Fabric Roll.**
- **Place longer shaft** on Motor side.
- c. **Lift Fabric Roll onto Uprights.**
- **Use suitable method to lift** Fabric Roll onto Pillow Blocks.
 - * Do not damage Fabric Roll.
 - **Align Pillow Block Bearings** over Pillow Blocks in the Uprights (Figure 6a).
 - **Match the threaded holes** in the Bearings and the Pillow Blocks.
 - **CHECK FABRIC ROLL FOR LEVEL.**

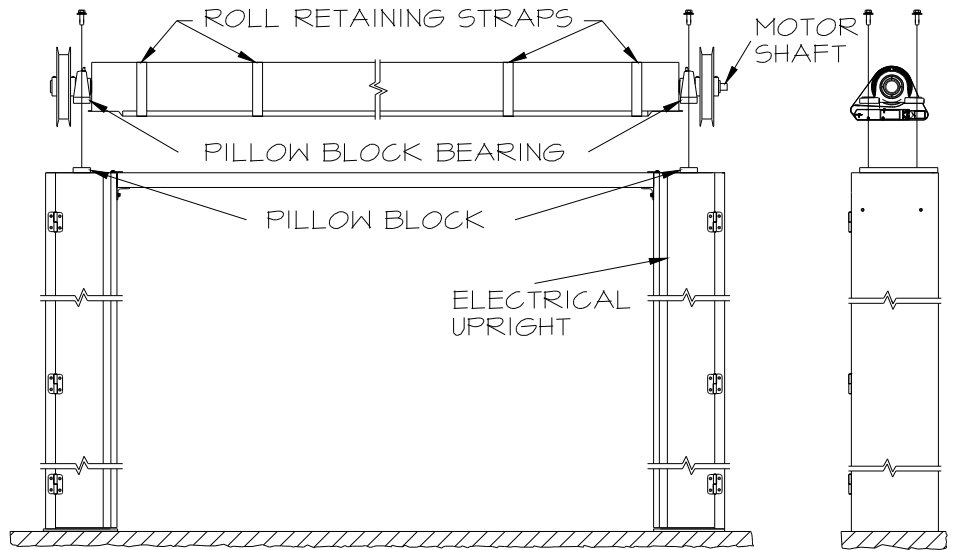


FIG. 6A

NOTE: THE PILLOW BLOCK BEARINGS MUST SIT EXACTLY ON THE PILLOW BLOCKS AND MUST BE AT RIGHT ANGLES TO THE FABRIC ROLL SHAFT.

- d. **Attach Pillow Block Bearings to Pillow Blocks.**
- **Insert supplied hardware** into threaded holes (Figure 6b).
 - **Tighten.**
 - **Repeat** for other side.

DANGER: DO NOT REMOVE LIFTING DEVICE FROM FABRIC ROLL UNTIL PILLOW BLOCK BEARINGS ARE PROPERLY ATTACHED.

3/4" PLATE WASHER
 3/4" B.S. LOCK WASHER
 3/4"x2.5" HEX BOLT (4x)

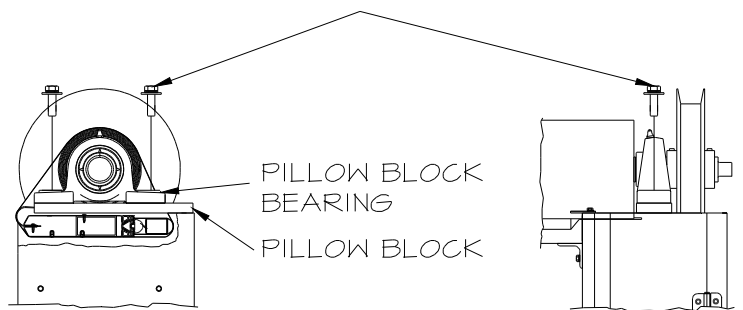
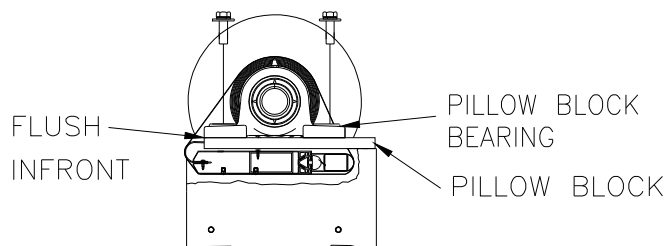


FIG. 6B



6. Prepare to Install Motor

a. **Attach Motor Brackets** to electrical Upright (Figure 7a).

- **Select Motor Bracket with no notch** and larger return.
- On side of electrical Upright, **locate threaded bolt holes closest to the wall**.
- **Match bolt holes** in Motor Bracket and Upright.
- **Insert** supplied hardware.
- **Tighten.**
- **Repeat for other Motor Bracket** using bolt holes closest to front of door.

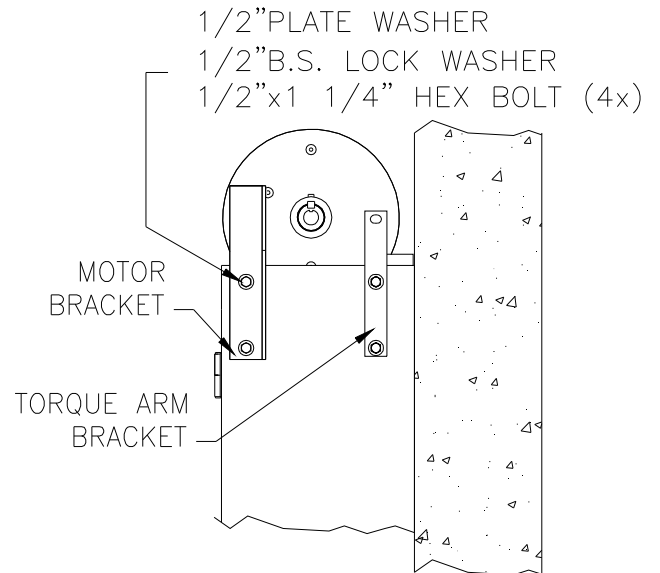


FIG. 7A

**This door no longer has a Coupling.
 It is direct Drive.

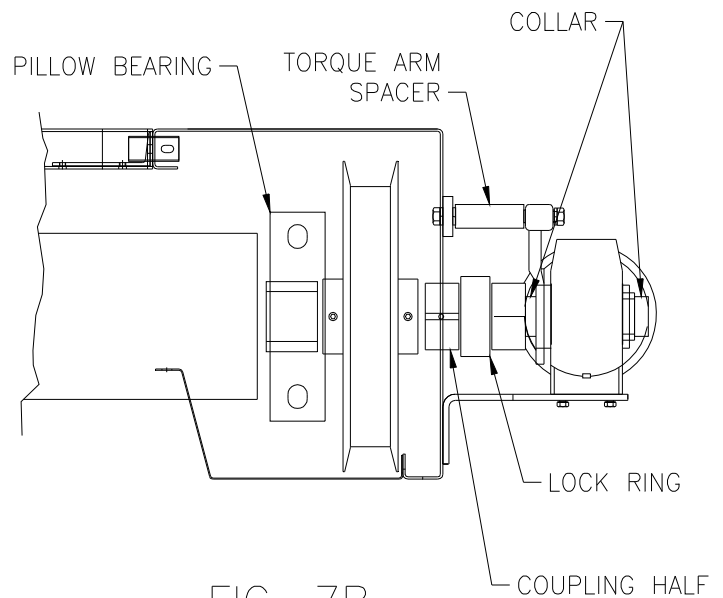


FIG. 7B

Install Motor on Electrical Upright

- a. **Position Motor.**
 - **Determine safe method of lifting Motor.**
 - **Lift Motor** up to Motor Brackets.
 - **Slide Gearbox on shaft** (Figure 7c).
- b. **Attach Motor** to Motor Brackets.
 - **Match bolt holes** in Motor Brackets and Gearbox on both sides.
 - **Insert hardware.**
 - **Tighten.**

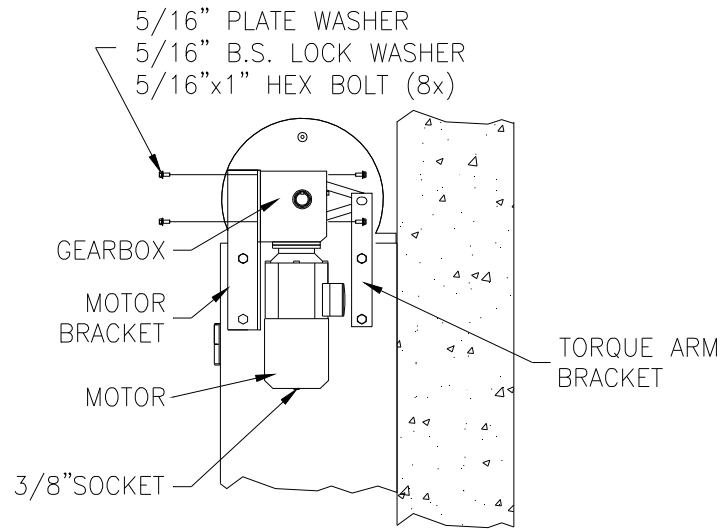


FIG. 7C

7. Install Door Tabs

- a. **Prepare Door.**
 - **Remove plastic and straps** from Fabric Roll.
 - **Insert Fabric into gap** between Wind Bar Guide Tracks (Figure 8a).
 - **Insert Manual Crank Handle** into Manual Crank Clevis at bottom of Motor.
 - **Turn Manual Crank Handle to lower Fabric** to comfortable working height.
- b. **Pull Door Tab into Upright.**
 - **Grasp Cable Tie.**
 - **Thread Cable Tie through gap** between Wind Bar Guide Tracks.
 - **Pull Door Tab through gap** using Cable Tie.
- c. **Attach Door Tab to Bottom Bar.**
 - **Match bolt holes** in Door Tab and Bottom Bar (Figure 8b).
 - **Insert hardware.**
 - **Tighten.**

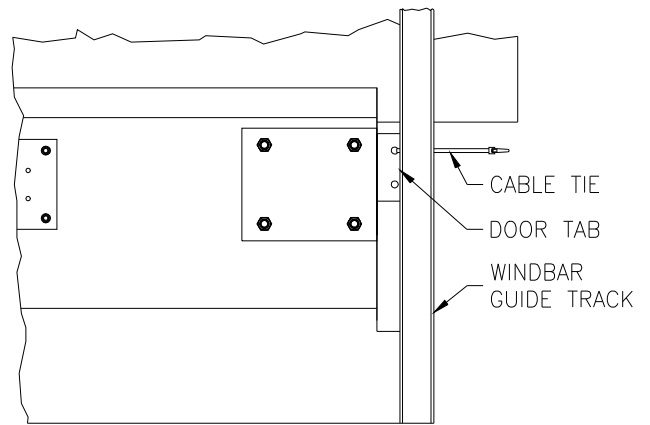


FIG. 8A

8. Attach Guide Wheel Assembly

- a. **Two Guide Wheel Assemblies** come with the door.
 - This door has no limits in the guide it has an encoder on the Motor.
- b. **Place Guide Wheel Assembly in Upright.**
 - **Align holes** in Guide Wheel Assembly with holes in Door Tab.
 - **Insert hardware.**
 - **Tighten.**
 - **Repeat** for other side.

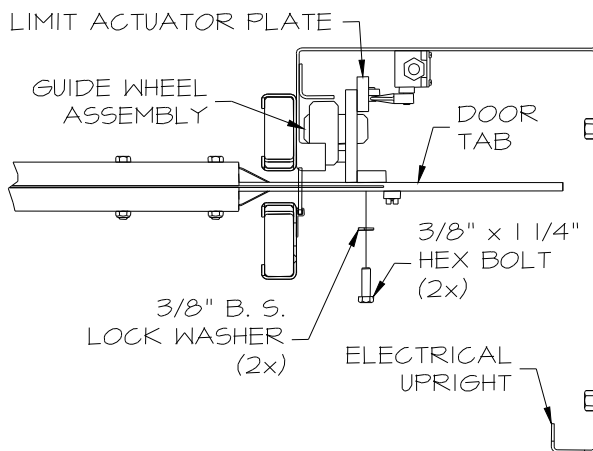
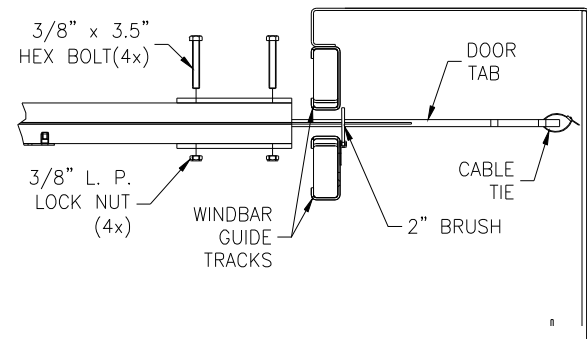


FIG. 9A

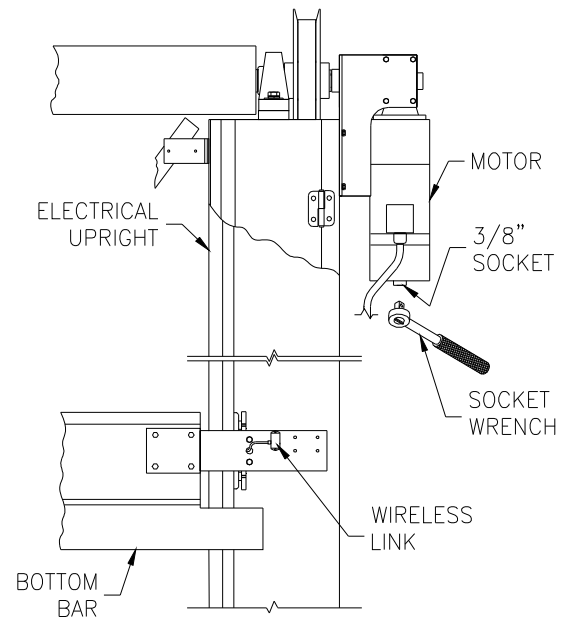


FIG. 9B

9. Position Counterweight Drum

- a. **Insert Manual Crank Handle** into Manual Crank Clevis.
- b. Turn the Manual Crank Handle and **open the Door as high as it can go.**
- c. **Unwind Door until gap is centered at back** of door (Figure 10).

10. Unwind Counterweight Strap

- a. **Counterweight Strap.**
 - **Guide Counterweight Strap to front of door** and let fall to floor.
- b. **Wrap Counterweight Strap around Counterweight Drum.**
 - Wrap Strap around Counterweight Drum **at least 1-1/2 and no more than 2-1/2 times** (Figure 10).
 - * **Wrap Counterweight Strap towards front** of door.
 - * **Make sure Counterweight Strap does not twist.**

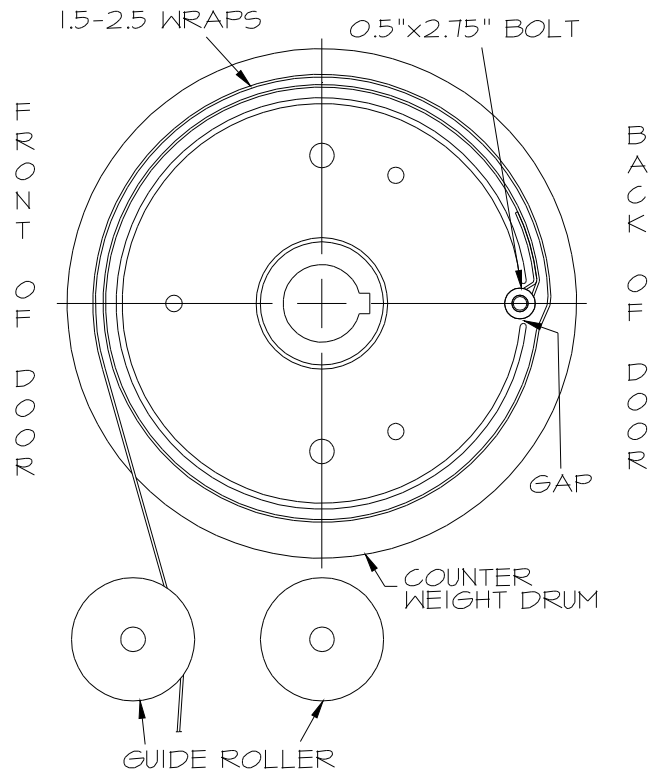


FIG. 10

11. Attach Counterweight Strap, continued

- c. **Thread Counterweight Strap** through Guide Rollers.
 - **Lift Counterweight** about 2 feet off the ground using suitable method.
 - **Thread Counterweight Strap** as follows (Figure 11a):
 - * 1 – Inside Guide Roller
 - * 2 – Under Counterweight Roller
 - * 3 – Over Guide Roller
 - * 4 – Through “S” Wrap Guide Roller
 - * 5 – Under Guide Roller
 - * 6 – Up to Door Tab.
- d. **Attach Counterweight Strap** to Door Tab (Figure 11b).
 - **Place loose Counterweight Strap end** above top edge of Door Tab.
 - **Place Counterweight Strap Clamp** over top.
 - **Align holes** in Counterweight Strap Clamp with holes in Door Tab.
 - **Insert hardware.**
 - **Tighten.**
- e. **Lower Counterweight** and remove lifting device.
- f. **Repeat** for other side.

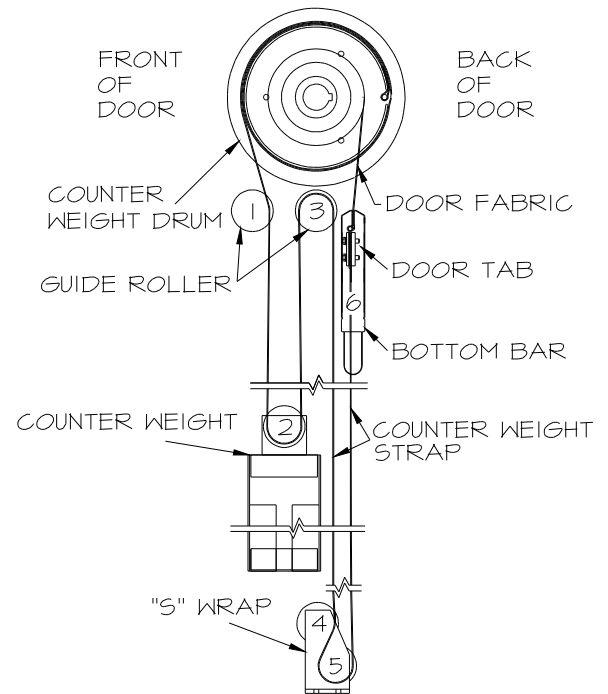


FIG. 11A

11. Install Counterweight blocks

- a. Insert blocks into Counterweight Frame
 - **Divide supplied Counterweight blocks** into two equal groups.
 - **Slide one group of blocks** into a Counterweight Frame (Figure 11c).
 - **Slide the remaining group of blocks** into the Counterweight Frame on the other side of the door.

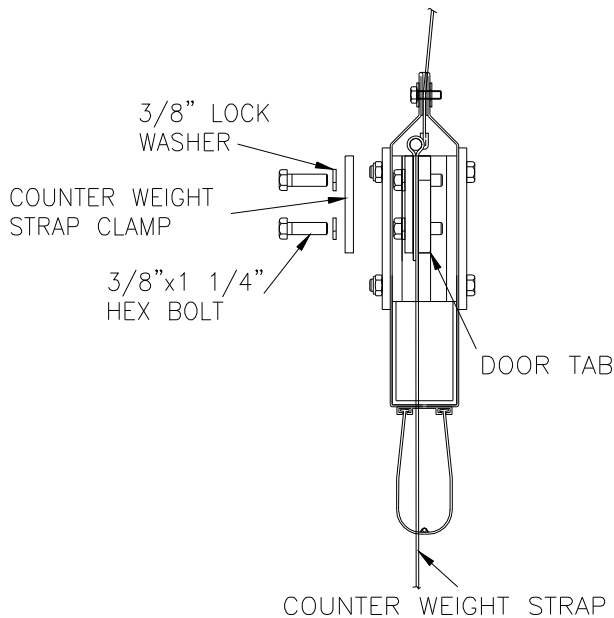


FIG. 11B

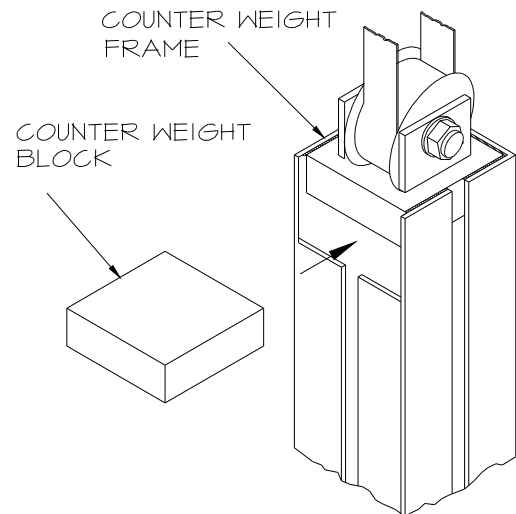


FIG. 11C

Leave Fabric Roll at top of door for Electrical Installation and Hookup by a qualified Electrician.

- **CONTINUE WITH WINDBAR INSTALLATION AFTER ELECTRICAL INSTALLATION AND HOOKUP IS FINISHED.**

12. Prepare to Install Wind Bars

- Prepare door..**
 - Make sure a Windbar, tools, and materials are on the front of the door.
 - Lower fabric to ground and close door.
 - * Use JOG MODE.
- Prepare Wind Bar Straps.**
 - Flip two longer inner straps over the top of the Fabric Roll (Figure 12b).
 - Slide Wind Bar Straps between the Brush Gasketing and the Fabric.
 - Let Wind Bar Straps drop down behind door.
 - * Make sure straps are not twisted.
- Attach Wind Bar Strap Clamps to front of Uprights (Figure 12c).**
 - Position Wind Bar Strap Clamp at top of Upright.
 - Match bolt holes.
 - Insert hardware.
 - Tighten.

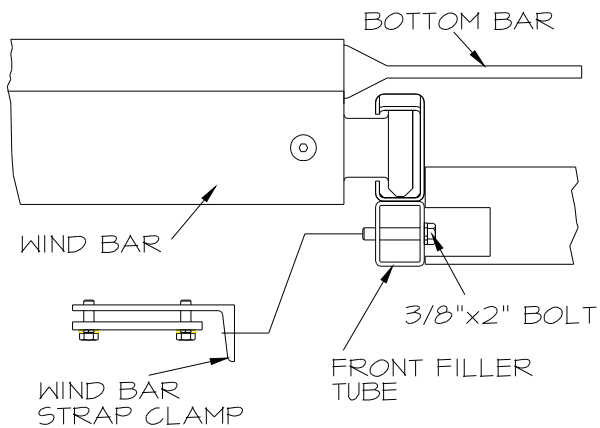


FIG. 12C

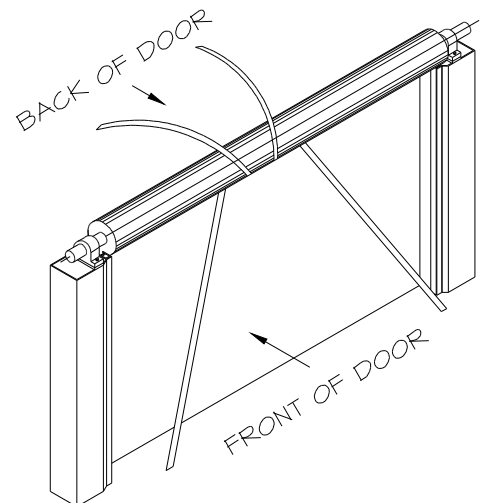


FIG. 12B

13. Install Wind Bars on Front of Door

- a. Install Wind Bar.
 - Slide Wind Bar Guide Roller through circular notch in Door Track on one side of door (Figure 13a).
 - Lift Wind Bar up in Door Track.
 - Insert 2 x 4 spacer block onto support plate in Door Track underneath Wind Bar.
 - Repeat for other side.
- b. Attach Wind Bar Straps to Wind Bar (Figure 13b).
 - Make sure the shorter, outer straps are behind the Wind Bar.
 - On one side, wrap Wind Bar Strap underneath and around the Wind Bar.
- c. On that side, attach Wind Bar Strap to Wind Bar Strap Clamp on Upright.
 - Loosen the Strap Plate.
 - Thread Wind Bar Strap from below between Plate and Clamp.
 - Pull Strap until Strap is snug around Wind Bar, but is not lifting the Wind Bar. (Tension?)
 - Tighten Strap Plate.
 - Repeat for other Upright.
- d. Remove Spacer Blocks from Door Tracks on each side.
- e. Move to back of Door.

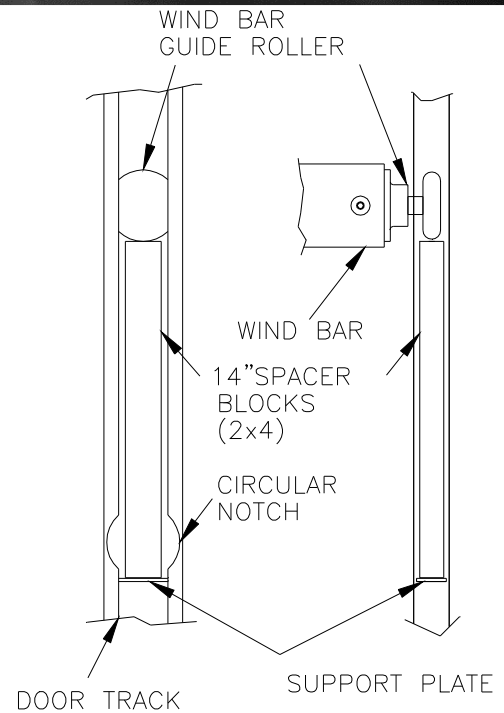


FIG. 13A

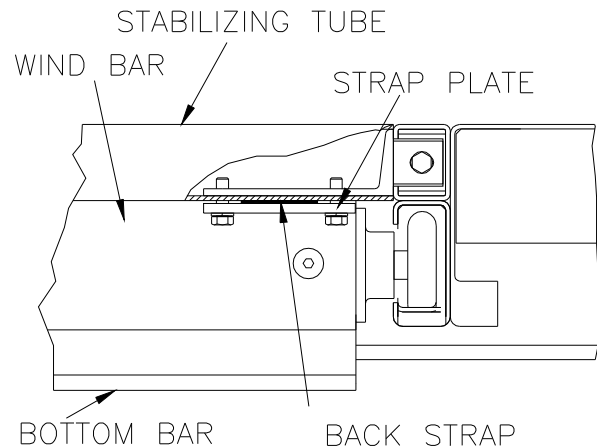


FIG. 13B

14. Install Wind Bars on Back of Door

- a. Install Wind Bar.
 - Slide Wind Bar Guide Roller through circular notch in Door Track on one side of door (Figure 13a).
 - Lift Wind Bar up in Door Track.
 - Insert 2 x 4 spacer block onto support plate in Door Track underneath Wind Bar.
 - Repeat for other Upright.
- b. Attach Wind Bar Straps to Wind Bar (Figure 13b).
 - Make sure the inner straps are behind the Wind Bar.
 - On one side, wrap Wind Bar Strap underneath and around the Wind Bar.
- c. On that side, attach Wind Bar Strap to Wind Bar Strap Clamp on Upright.
 - Loosen the Strap Plate on the Top Stabilizing Tube.
 - Thread Wind Bar Strap between Top Stabilizing Tube and Plate.
 - Pull Strap until Strap is snug around Wind Bar, but is not lifting the Wind Bar. (Tension?)
 - Tighten Strap Plate.
 - Repeat for other Upright.
- d. Remove Spacer Blocks from Door Tracks on each side.

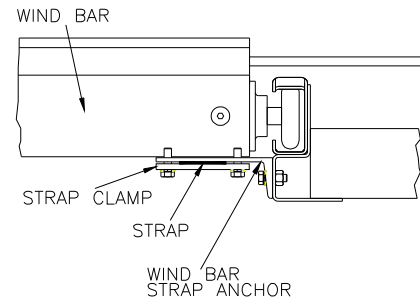


FIG. 13C

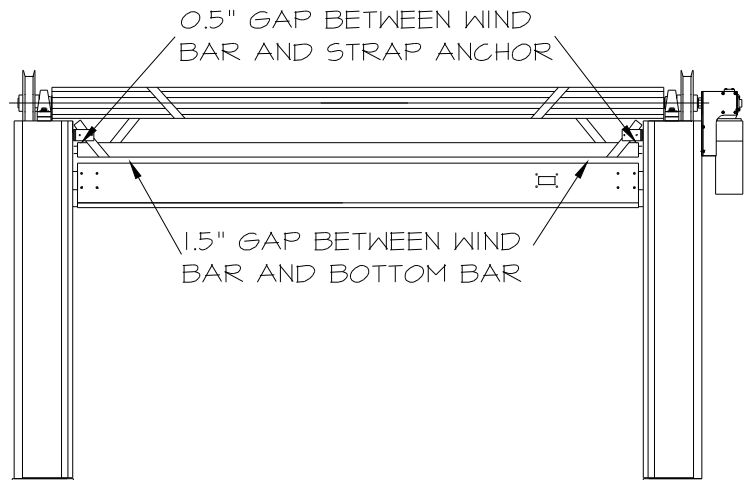


FIG. 14A

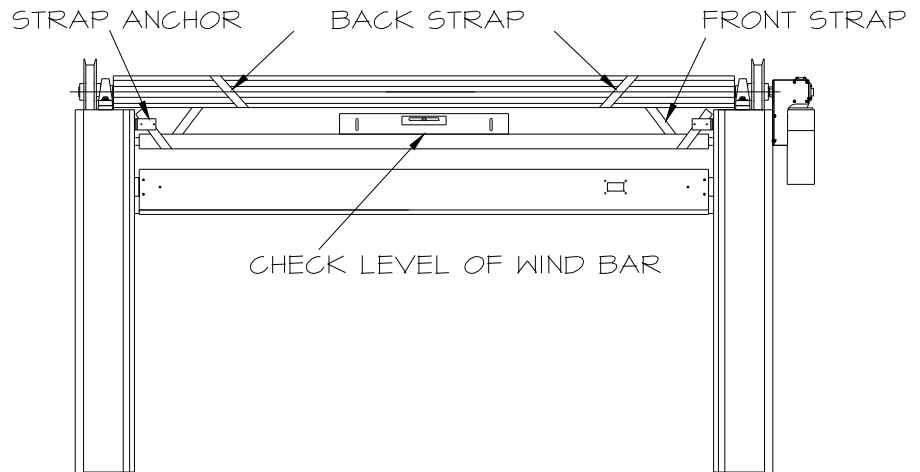


FIG. 14B

Complete Wind Bar Installation

- a. Open door.
- c. Close Upright covers.
 - Insert hardware and secure cover.
 - Clean Door.
- d. Leave Fabric Roll at top of door for Electrical Installation and Hookup by a qualified Electrician.
 - CONTINUE WITH STARTUP/FINAL ADJUSTMENTS AFTER ELECTRICAL INSTALLATION AND HOOKUP IS FINISHED.

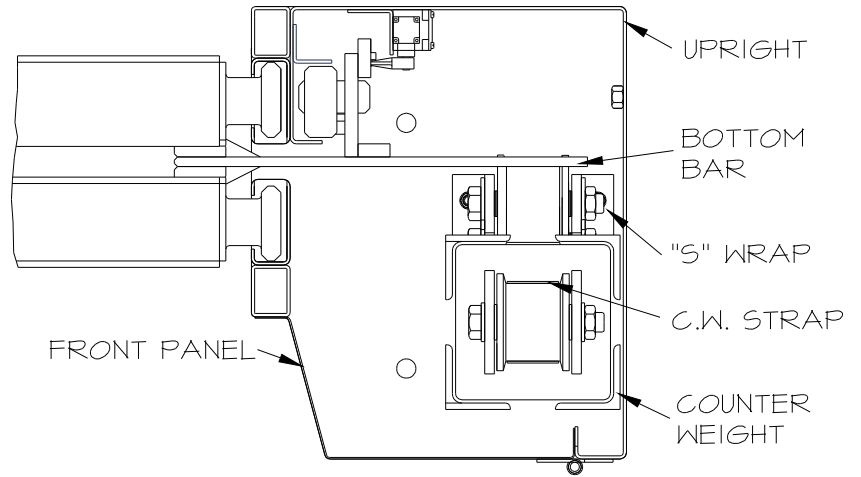


FIG. 15A

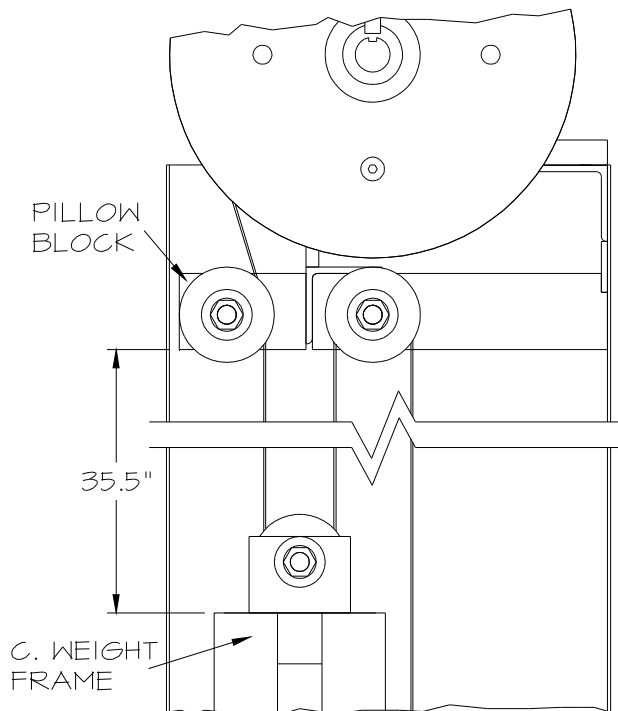


FIG. 15B

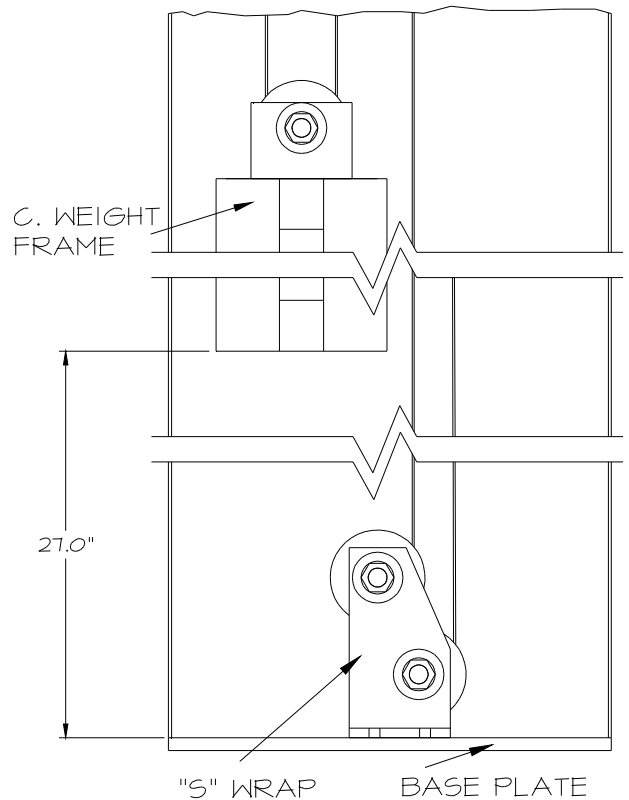


FIG. 15C

Customer: _____

Attention: _____

Location: _____

Phone #: _____

Date: _____

Fax #: _____

Recommended inspection: Every 10,000 Cycles or Every 3 Months

Inspected By: _____

Inspect (DISCONNECT POWER)	e	Lub.	Repair Req'd?	Description of Repair / Maintenance	Repair Date	Initial
DOOR MOUNTING HARDWARE - Wall Anchors - Floor Anchors						
BEARINGS ON FABRIC ROLL - Mounting Bolts - Set Screw - Grease						
FABRIC DOOR PANEL - Fabric						
BOTTOM BAR - Door Tabs - Guide Wheel Ass'y - Bottom Bar Profile - Coil Cord (if installed) - Bottom Edge Sensor - Fastening Bolts						
UPRIGHTS - Gasketing - Photo eye - Limit Switches - Electrical Wiring - Counterweight Straps - Counterweight Drums - Fastening Bolts - Wind bar, Wheels, and Straps - Set Screws						
MOTOR - Brake - Gearbox - Fastening Bolts - Couplings, Ring, and Spider						

Note: Review door with customer to ensure that appropriate additional safety devices and activators are installed on the door and are properly tested, thus guaranteeing maximum user safety given the door application and the expected traffic.

Comments

Repairs Recommended

LIMITED WARRANTY

SUPER SEAL MFG. LTD. PRODUCTS ARE WARRANTED TO BE FREE OF DEFECTIVE MATERIAL AND WORKMANSHIP FOR A PERIOD OF (1) YEAR FROM THE DATE OF SHIPMENT. IF ANY FAILURE SHOULD OCCUR WITHIN THIS PERIOD, AND IT HAS BEEN DETERMINED BY A SUPER SEAL MFG. LTD.

REPRESENTATIVE THAT IT IS A DEFECT, SUPER SEAL MFG. LTD., WILL, AT ITS OPTION, REPAIR OR REPLACE THE DEFECTIVE PART(S) AT NO CHARGE.

THIS PRODUCT REQUIRES PREVENTIVE MAINTENANCE.

A COPY OF ALL PREVENTIVE MAINTENANCE REPORTS MUST BE SIGNED BY THE CUSTOMER AND BY THE END USER AND SENT TO SUPERSEAL.

THIS WARRANTY IS VOID IF SUPERSEAL DOES NOT RECEIVE PROOF OF PREVENTIVE MAINTENANCE.

THIS WARRANTY DOES NOT COVER ANY FAILURE CAUSED BY FAULTY OR INCORRECT INSTALLATION, MISUSE, MISAPPLICATION, OR ANY ALTERATIONS TO THE PRODUCT.

THE WARRANTY IS IN LIEU OF ALL GUARANTEES AND WARRANTIES BY ANYONE OTHER THAN SUPER SEAL MFG. LTD.

ALL SALES ARE F.O.B. FACTORY.